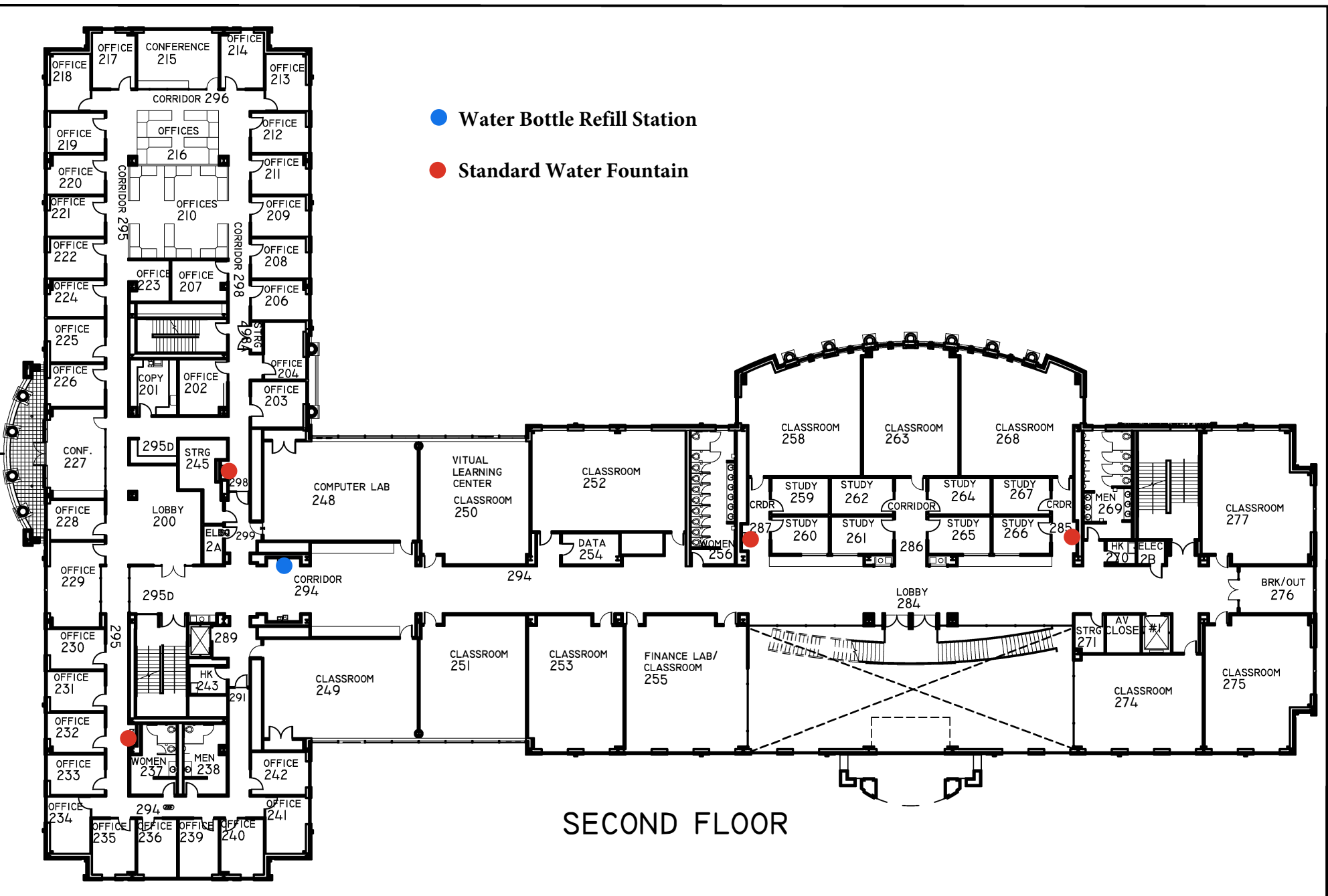


DWG. NO.:	REVISION DATE:
A-1	08-22-2018
BLDG. CODE:	SCALE:
PH	NTS
	DESIGN BY:
	PLA
	CHECKED BY:
	TMM

RECORD FLOOR PLAN
PERDUE HALL

FIRST FLOOR PLAN

SALISBURY UNIVERSITY
 FACILITIES PLANNING & CAPITAL PROJECTS
 ARCHITECTURAL AND ENGINEERING SERVICES
 1101 CAMDEN AVENUE
 SALISBURY, MARYLAND 21801
 410 - 543 - 6215

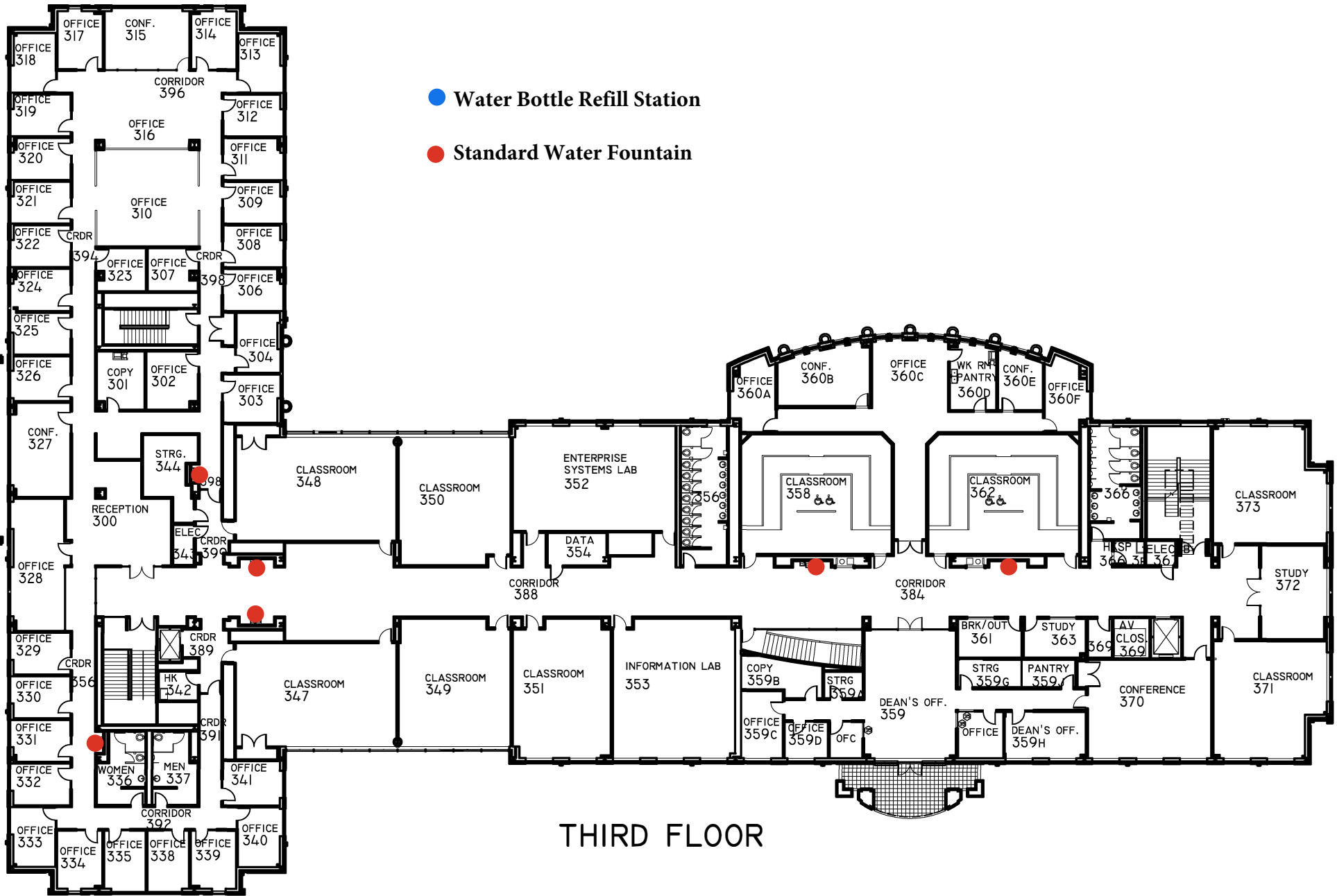


- Water Bottle Refill Station
- Standard Water Fountain

SECOND FLOOR

DWG. NO.: A-2 BLDG. CODE: PH	REVISION DATE: 08-22-2018 SCALE: NTS DESIGN BY: PLA CHECKED BY: TMM	RECORD FLOOR PLAN PERDUE HALL	SECOND FLOOR PLAN	SALISBURY UNIVERSITY FACILITIES PLANNING & CAPITAL PROJECTS ARCHITECTURAL AND ENGINEERING SERVICES 1101 CAMDEN AVENUE SALISBURY, MARYLAND 21801 410 - 543 - 6215
---	---	--	--------------------------	--

- Water Bottle Refill Station
- Standard Water Fountain



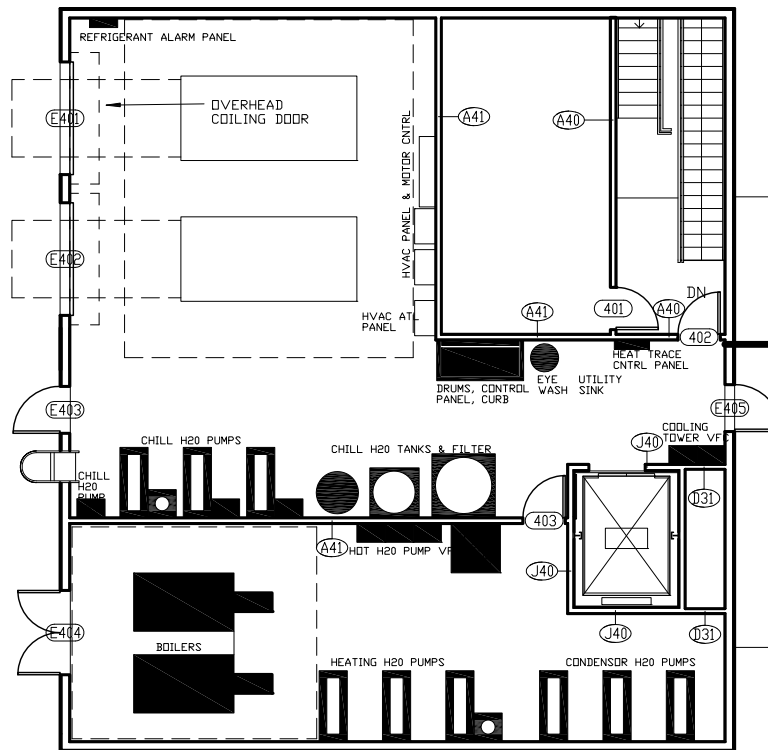
THIRD FLOOR

DWG. NO.:	REVISION DATE:
A-3	08-22-2018
BLDG. CODE:	SCALE:
PH	NTS
	DESIGN BY:
	PLA
	CHECKED BY:
	TMM

RECORD FLOOR PLAN
PERDUE HALL

THIRD FLOOR PLAN

SALISBURY UNIVERSITY
 FACILITIES PLANNING & CAPITAL PROJECTS
 ARCHITECTURAL AND ENGINEERING SERVICES
 1101 CAMDEN AVENUE
 SALISBURY, MARYLAND 21801
 410-543-6215



DWG. NO.:	REVISION DATE:
A-4	08-22-2018
BLDG. CODE:	SCALE:
PH	NTS
	DESIGN BY:
	PLA
	CHECKED BY:
	TMM

RECORD FLOOR PLAN
PERDUE HALL

PENTHOUSE PLAN

SALISBURY UNIVERSITY
 FACILITIES PLANNING & CAPITAL PROJECTS
 ARCHITECTURAL AND ENGINEERING SERVICES
 1101 CAMDEN AVENUE
 SALISBURY, MARYLAND 21801
 410 - 543 - 6215